

## HTL-BU SERIES LIGHT FIXTURE



### OPTIONAL FEATURES

- Colors: Mid White (4100K)
- Operational voltages for special applications
- Other colors upon request NVIS Red, Blue, Green A and Green B
- Other lengths upon request

### NOTES & PATENT INFORMATION

US Patent #7,307,391 8,115,411 8,791,650  
9,179,513  
Canada Patent #2,651,224 2,555,065 2,831,641  
International Patents Pending  
For complete and up to date patent information see  
our website

### DESCRIPTION

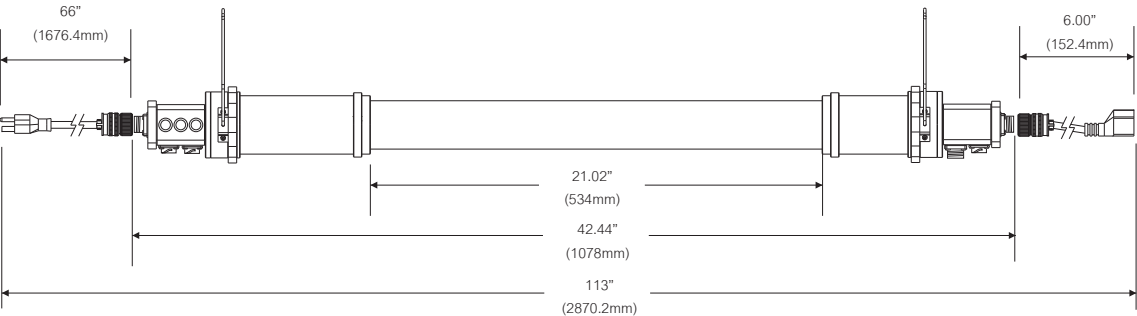
The highly robust HTL light for design use in expeditionary shelters and flexible tent applications. The two designed ends designed to be hung via straps or via the fixed hook attached.

### STANDARD FEATURES

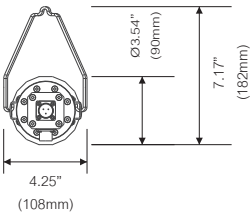
- Solid state lighting device, works well in all types of environments
- Instant on, no warm up time required
- Lasts 5 times longer than fluorescent
- No mercury, No lead
- No IR, No UV
- Minimum Lumen Maintenance: L70 (70% @ 50,000 hours)
- EMC: Compliance to FCC Part 18 Class B
- Water proof design, IP67 rating
- 5000K Cool White Color (ANSI C78.377-2008)
- Compliance to MIL-PRF-44259D
- Compliance to MIL-STD-461
- MTBF: 40,000 Hours
- Weight: 3.56kg (without cables, 3.11kg)
- Standard -51°C operation

## DIMENSIONS

SIDE VIEW (WITH STANDARD 6' CABLE)



END VIEW



## ELECTRICAL STATS & OPERATING FUNCTIONS

Series	Input Voltage (Volts)			Input Current (Amps)			Light Lens Type	Correlated Color Temperature (CCT)*	Intensity	Power Consumption (Watts)
	MIN	TYP	MAX	MIN	TYP	MAX			Lumen	TYP
HTL-BU	90	120	264	0.11	0.25	0.333	MILK WHITE	4100K	2904	30
								5000K	3125	30

\*ANSI Standard Color Temperature Range: 5028K (+/- 283K) as per C78.377-2008

## ORDERING INFORMATION

SERIES	CERTIFICATION & TEMPERATURE		LENGTH OF LIGHT	VOLTAGE	LED TYPE	WATTAGE	LIGHT COLOR	SECONDARY LIGHT*	CABLE LENGTH	PLUG TYPE	OPTIONAL FUNCTIONS	
HTL	B	U	24	120	0-B	30	XX	X	XX	X	X	X
UNIVERSAL ADAPTABLE MIL-STD-461 (-51°C~50°C)			120VAC (90-264VAC 50-60Hz)		50 = Cool White (5000K) 41 = Cool White* (4100K)		X = No Secondary Color B = NVIS Blue G = NVIS Green A R = NVIS Red		6 = 72" (6') 12 = 144" (12)*		D = Dimmable, Main Color dims to 25%, 50%* N = No Dimming	
Military Grade = Typ. 25°C (77°F) Range: -51°C (-60°F) ~ 50°C (122°F), MIL-PRF-44259D									A = Standard North American (NEMA 5-15/5-20) B = South American* C = European*		N = No Emergency Back-Up C = Capacitive Back-Up* B = Battery Back-Up*	

Example:

HTL-BU-24-120-0-B-30-50G-6A-D-C = HTL Series, MIL-461, -51°C~50°C, 24" light, 120VAC, 30W, Cool White (5000K), Green A  
Secondary, 6' NEMA 5-15, Dimming 25%, 50%, Capacitive Back-Up

\*Special Order, contact factory for further details.  
1. Pre-set dimming, for main light color only