

## GLD SERIES

### HYBRID LED TUBE TYPE A OR B



### SPECIFICATIONS

Model	10W	12W	14W
Lumens per watt	180	150	125
Input voltage	100-277VAC or 347VAC		
Materials	Glass		
Connector type	G13		
CCT	3000K,3500K,4000K, 4500K,5000K 6000K		
CRI	>80		
Beam angle	330°		
Power factor	>0.95		
Operating temperature	-20°C~40°C (-4°F~104°F)		
Weight	0.35Kg		
THD	<20%		
Lifespan (hrs)	50,000		

### DESCRIPTION

LED Smart has created a hybrid direct-fit tube for your convenience. Our tubes are a plug and play installation for use with fluorescent ballasts with one twist. When your ballast dies, you have two options, 1) replace the ballast or 2) bypass the ballast eliminating a future ballast failure.

As electricians change the wiring in existing fixtures from shunted to non-shunted our T8 will still work in the non-shunted wiring format.

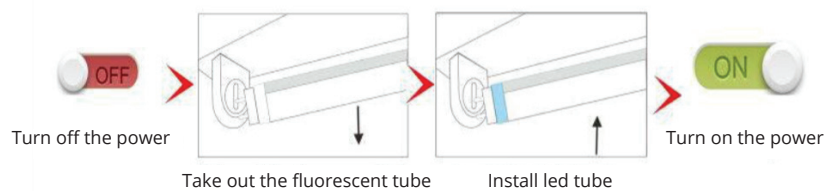
It is also highly efficient with an amazing 180 lumens per watt which provides an amazing 1800 lumens from just 10 watts. Safe for use in many environments such as dry, damp, vapor tight and sealed fixtures.

### FEATURES

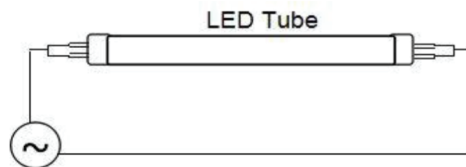
- Perfect compatibility with instant electronic ballast
- 100-277VAC or 347VAC connect with single end power and double end power
- High energy efficiency
- Specialized glass cover design for optimal light distribution and smooth visual effect.

## USE METHOD

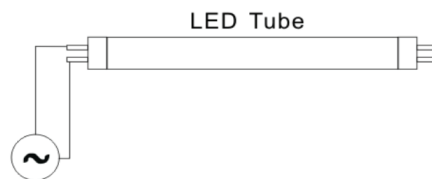
### 1. **TYPE A:** Double-end works with electronic ballast



### 2. **TYPE B SHUNTED:** Directly links to existing voltage via double power input without ballast



### 3. **TYPE B NON-SHUNTED** Directly links to existing voltage via single power input without ballast



## ORDERING INFORMATION

SERIES	PIN TYPE	LENGTH	VOLTS	LED TYPE	WATTAGE	COLOR
GLD	G G = G13	48	XXX 120 = 100-277 347 = 347VAC	0-C	12 10 = 10W 12 = 12W 14 = 14W	XX 30 = 3000K 35 = 3500K 40 = 4000K 50 = 5000K 60 = 6000K