

PLC 2 SERIES

PARKING/LOADING ZONE LIGHTING



SPECIFICATIONS

Model number	PLC2
System power	35W, 50W, 80W, 100W, 150W
Input voltage	100-277/200-480VAC
HZ	50-60Hz
Power factor	0.99
Efficiency	140lm/W
Lumen delivered	up to 21000lm
CCT	3000K, 4000K, 5000K, 57000K
CRI	>70
EPA rating	0.75
Max THD	14%
IP rating	IP65
Beam angle	T3, T4, T5
Certification	UL, DLC, FCC, CE, RoHS
Dimmability	1~10VDC & PWM signal and resistance
Lifespan	L90 100,000Hrs
Warranty	10 years

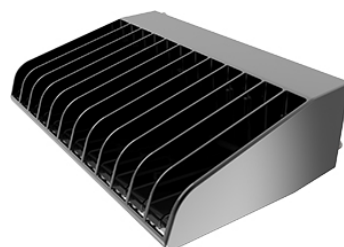
DESCRIPTION

This is another version of our area pole light providing superior lumens per watt. It reduces your operating expenses even lower while providing phenomenal illumination & precise anti-glare control.

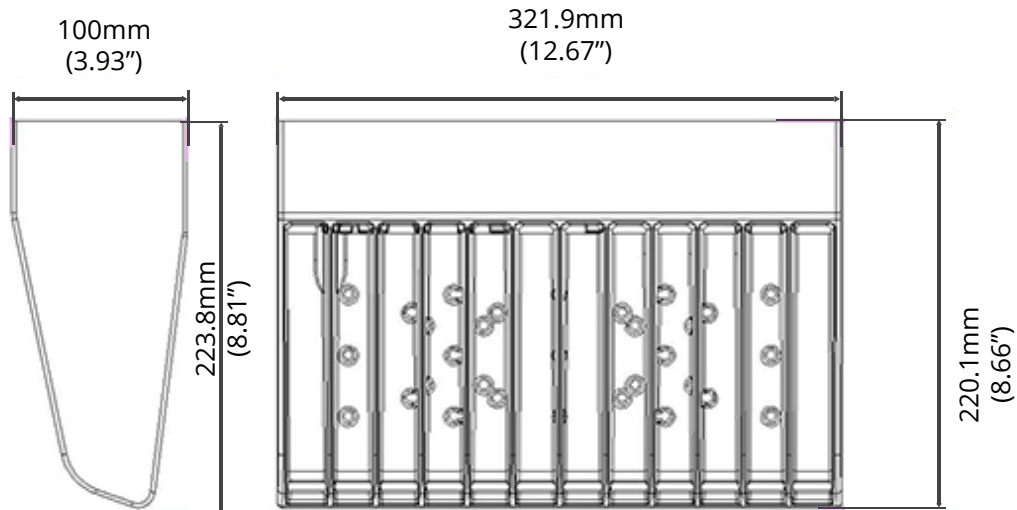
A optional built in photo and motion sensor camera to reduce illumination in less traffic areas, with instant on when motion is detected. A must have in parking lots, malls, schools, university, churches, hospitals and residential roadways.

FEATURES

- Housing materials: die casting aluminum
- Input voltage: 100-277VAC or 200-480VAC
- Lens materials: fire proof PC
- 10 year warranty
- Up to 21000lm delivered
- 3000K, 4000K, 5000K, 5700K
- L70 100,000Hrs
- Optional wall mounted bracket



DIMENSIONS



ORDERING INFORMATION

SERIES	VOLTS	WATTAGE	COLOR	BEAM ANGLE	MOUNT	DIMMING
PLC2	XXX	XXX	XX	X	X	X
	120 = 100-277VAC 347 = 200-480VAC	35 = 35W 50 = 50W 80 = 80W 100 = 100W 150 = 150W	30 = 3000K 40 = 4000K 50 = 5000K 57 = 5700K	3 = T3 4 = T4 5 = T5	A = Arm mount S = Slipfitter mount W = Wall mount	D = Dimmable N = Non Dimmable