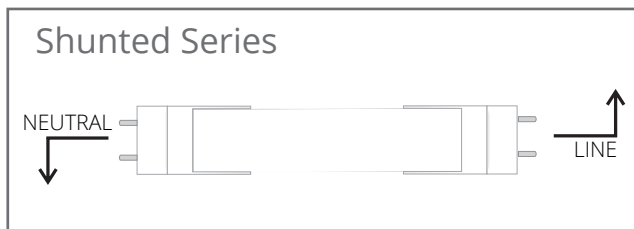


15W INTERNAL DRIVER 15W Shunted Series Type A



NOTES & PATENT INFORMATION

US Patent #7,307,391 8,115,411 8,791,650
9,179,513

Canada Patent #2,651,224 2,555,065 2,831,641

International Patents Pending

For complete and up to date patent information see our website

DESCRIPTION

The LED Lighting tube has been designed to work with conventional fluorescent fixtures. The LED Lighting tube can be used to retrofit existing fluorescent installations in all types of applications. These lamps are capable of working with 99% of electronic and magnetic ballasts and without ballasts with direct AC input.

STANDARD FEATURES

- With Ballast: 100VAC ~ 347VAC
- Direct AC input (Without Ballast): 100VAC ~ 277VAC
- 48"
- 5000K Cool White LEDs
- Frosted White Lens
- Bi-Pin, Instant start connection type

OPTIONAL FEATURES

- Colors: 2800K, 3000K, 3500K, 4000K, 4500K, 6500K
- Clear or Single Frosted lenses
- Single Pin (FA8) or Recessed Double Contact (R17D)

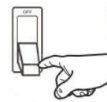
BALLAST COMPATIBLE

For replacement of 32WT8 lamps only.
Compatible with: Instant start electronic, program instant start, rapid start ballasts

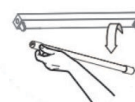
*For a list please ask your sales rep, or check our website. Do not use with Pre-Heat Fixtures.

QUICK INSTALLATION

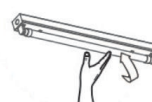
TURN OFF
POWER



REMOVE
FLUORESCENT
TUBE



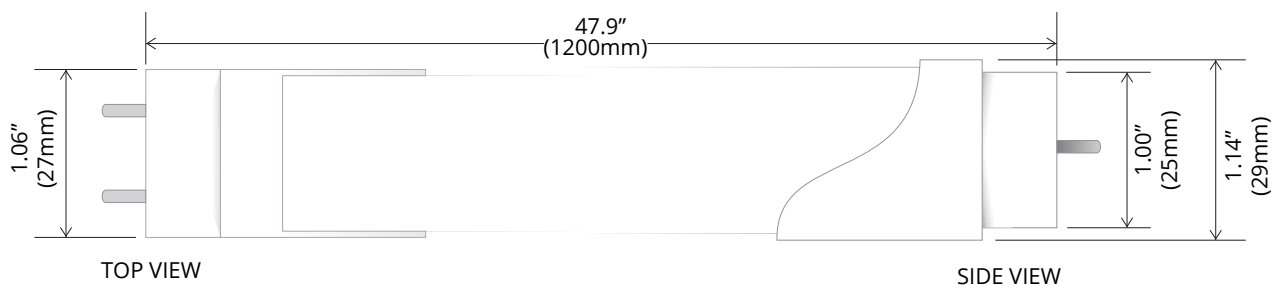
INSTALL
LED TUBE



TURN ON
POWER



DIMENSIONS



ELECTRICAL STATS & OPERATING FUNCTIONS

						WITH BALLAST			WITHOUT BALLAST			
Series	Size	Length	Lens	Watts	Color	Input Voltage	Lumens	Efficacy	Input Voltage	Lumens	Efficacy	CRI
FL	T8	48	CLEAR	15	2700K	100VAC ~ 347VAC	1800	125 lm/W	100VAC ~ 277VAC	1500	105 lm/W	>80
					3000K		1800			1500		
					3500K		1800			1500		
					4000K		1875			1600		
					4500K		1875			1600		
					5000K		1875			1600		
			FROSTED		2700K		1700	1600		110 lm/W		
					3000K		1700	1600				
					3500K		1700	1600				
					4000K		1800	1650				
					4500K		1800	1650				
					5000K		1800	1650				

ORDERING INFORMATION

SERIES	SIZE	TYPE	LENGTH	INPUT TYPE	LENS	WATTAGE	COLOR
FL	T8	BC	48	B	X	15	X
		BC = Ballast Compatible		B = Dual Input (Shunted)	C = Clear Lens F = Frosted Lens		50 = 5000K 45 = 4500K 40 = 4000K 35 = 3500K 30 = 3000K 27 = 2700K